

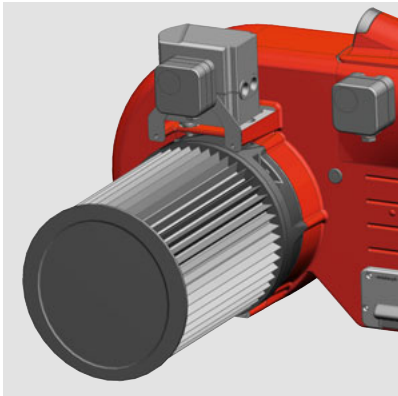
Weishaupt WM-G10 ZM-PLN gas burner

The next-generation Low-NO_x burner for ratings up to 1 MW with NO_x emissions below 20 mg/Nm³

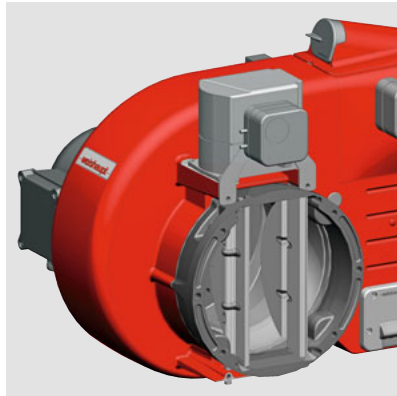
That's reliability.

–weishaupt–

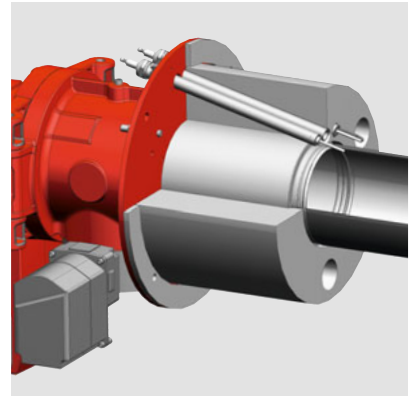
WM-G10 ZM-PLN: for extremely low NO_x emission limits



Air inlet with metal gauze filter



The air damper control has been designed to be particularly aerodynamic



Air-cooled ignition and flame electrode unit with integral sight glass for visual flame inspection

Weishaupt's latest burner model, the WM-G10 ZM-PLN, is for use where extremely low NO_x emission limits are in force.

Broad range of applications

The burner meets all the requirements of a wide variety of heat exchangers.

One particular advantage of this type of combustion system is that it can be used on appliances with particularly small combustion chambers, as well as with more typical boilers.

Special mixing assembly

To achieve the low-level NO_x emissions, Weishaupt uses a well-thought-out combination of premixing and surface-stabilised combustion.

The premixing ensures an homogeneous gas / air mixture and reliable ignition. Turndowns of 6:1 are achievable.

That's reliability

The ignition electrodes and the ionisation probes that serve as the primary flame sensor are both air cooled in order to safeguard their reliability.

More safety

A UV flicker detector serves alongside the ionisation probes as an additional flame sensor, resulting in an extremely high degree of safety.

A second air pressure switch guards against contamination of the combustion air and ensures the minimum air volume is always available.

Well-thought-out details

To simplify installation, the burner flange is mounted on the heat exchanger first, before the combustion surface is inserted. Likewise, with the burner hinged open, it is possible to replace the combustion surface without completely dismounting the burner from the heat exchanger.

The metal gauze air filter can be fitted with an optional protective sleeve that can then be replaced once it becomes excessively soiled.

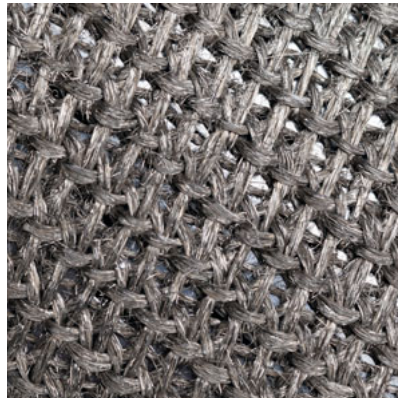
The ceramic insulator, which is included as standard, provides optimal heat shielding to the mixing assembly and the electrode unit.

Advantages:

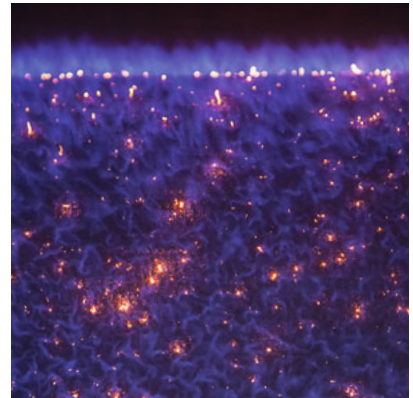
- The combustion surface can be withdrawn through the mounted burner flange
- Air-cooled ignition and ionisation electrode unit with sight glass for flame inspection
- Separate air pressure switches to monitor the inlet air pressure and the mixing pressure
- Flame monitoring via ionisation probe and UV flicker detector for increased safety
- W-FM 50 digital combustion manager (language neutral)
- Interference-free ignition unit
- Burner flange limit switch
- Silicone-free execution
- IP54 protection
- IE3 premium efficiency motor



A ceramic insulator provides optimal heat shielding to the mixing assembly and electrode unit

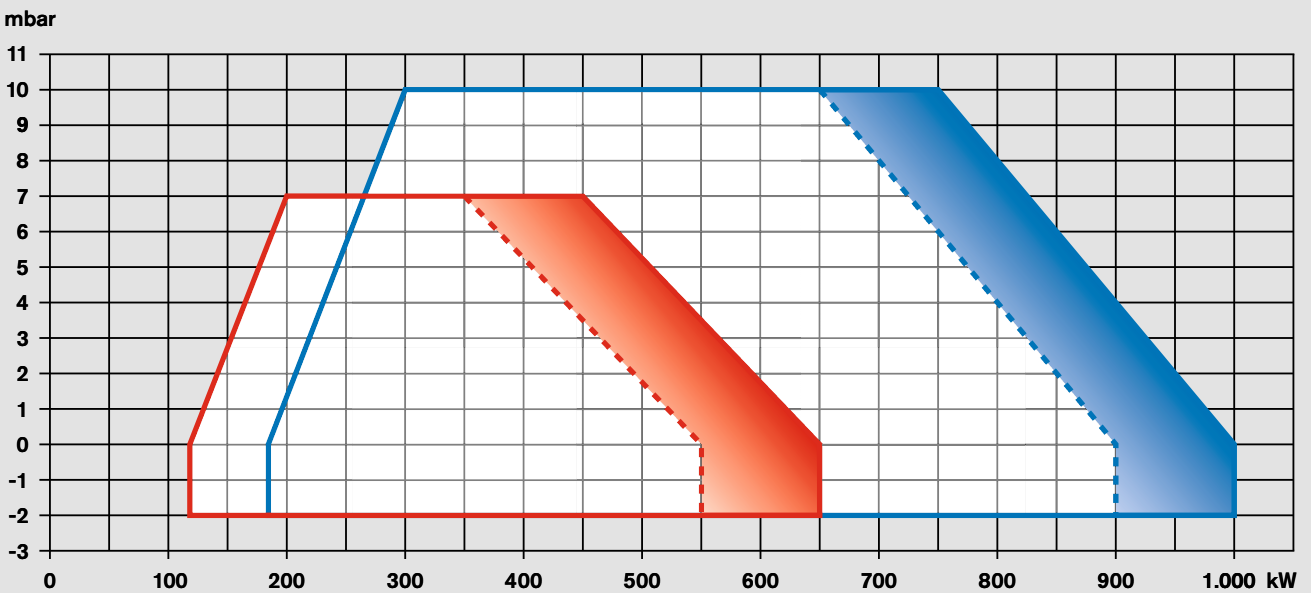


A microweave mat made from a high-quality alloy permits the right amount of gas / air mix to pass



Homogeneous, surface-stabilised combustion

Capacity chart (provisional)



WM-G10/2 ZM-PLN

- $\text{NO}_x < 50 \text{ mg/Nm}^3$ at 3% O_2
Maximum rating 650 kW
- - - $\text{NO}_x < 20 \text{ mg/Nm}^3$ at 3% O_2
Maximum rating 550 kW

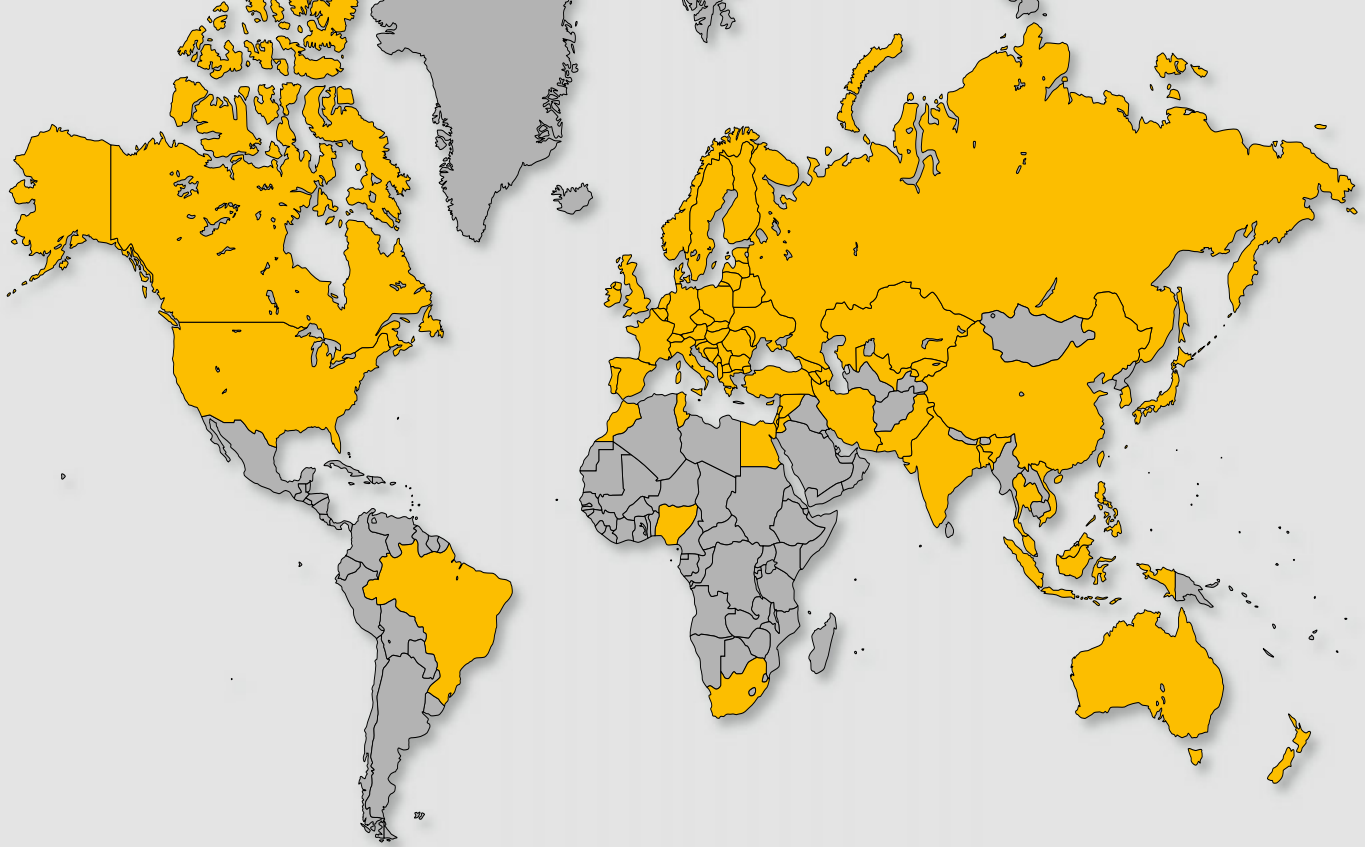
WM-G10/3 ZM-PLN

- $\text{NO}_x < 50 \text{ mg/Nm}^3$ at 3% O_2
Maximum rating 1 000 kW
- - - $\text{NO}_x < 20 \text{ mg/Nm}^3$ at 3% O_2
Maximum rating 900 kW

Turndown

- Natural gas 6:1
- LPG 5:1

Operation with $\text{NO}_x < 50 \text{ mg/Nm}^3$ requires an O_2 content of approximately 6%. · Operation with $\text{NO}_x < 20 \text{ mg/Nm}^3$ requires an O_2 content of approximately 8%.



Weishaupt worldwide:

Branch offices across Germany and numerous subsidiary companies, representatives and agents across the world provide local support.

Germany:

Augsburg
Berlin
Bremen
Cologne
Dortmund
Dresden
Erfurt
Frankfurt
Freiburg
Hamburg
Hanover
Karlsruhe
Kassel
Koblenz

Leipzig

Mannheim
Munich
Münster
Neuss
Nuremberg
Regensburg
Reutlingen
Rostock
Schwendi
Siegen
Stuttgart
Trier
Wangen
Würzburg

Subsidiaries:

Belgium
Bosnia
Brasil
Canada
Croatia
Czech Republic
Denmark
France
Hungary
Italy
Poland
Romania
Serbia
Slovakia

Slovenia
South Africa
Sweden
Switzerland (E)
United Kingdom
USA

Representation:

Bulgaria
China
Lithuania
Agencies:
Algeria
Australia
Austria
Bangladesh

Cyprus
Egypt
Estonia
Finland
Greece
India

Indonesia

Iran
Ireland
Israel
Japan
Jordan
Korea (South)
Kuwait
Latvia

Lebanon
Luxembourg
Malaysia
Macedonia
Moldova
Morocco
Netherlands
New Zealand
Nigeria
Norway
Pakistan
Philippines
Portugal
Russia
Singapore

Spain
Switzerland (W)
Syria
Taiwan
Thailand
Tunisia
Turkey
Ukraine
UAE
Vietnam

Max Weishaupt GmbH
88475 Schwendi
Tel +49 7353 830
Fax +49 7353 83358
www.weishaupt.de

Print No. 83216402, March 2016
Printed in Germany. All rights reserved.

–weishaupt–