

CODE OPTIONS

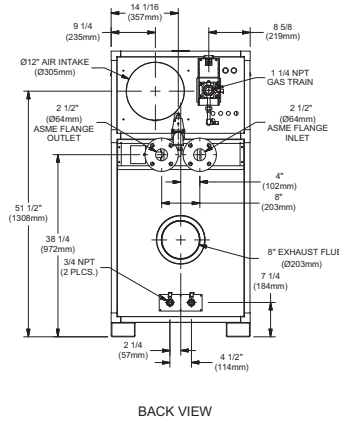
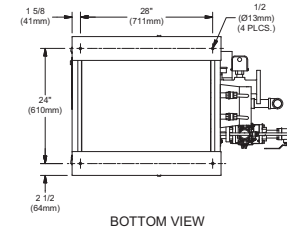
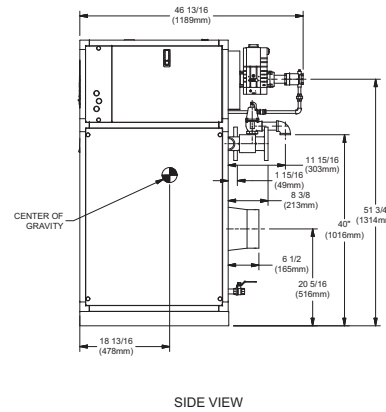
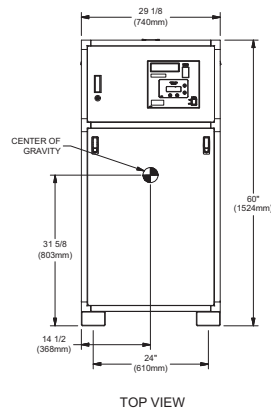
CSD-1	Manual Reset LWCO
Kentucky	200°F Maximum Operating Control and High Limit

NOTE: Dimensions are approximate and should not be used to "rough-in" equipment.

* Add circulator amps.

** For incoming gas pressures lower than 2" W.C. natural or propane, consult factory.

INDOOR UNIT



RSUB-59-J

A.G.A. CERTIFIED RATINGS & CAPACITIES

Fuel Type	Natural/Propane Gas	Boiler FLA	10.7*
Input BTU/hr.	1,500,000 / 440 kW	Min. Gas Pressure Required	2" W.C.**
Output BTU/hr.	1,305,000 / 382 kW	Max. Gas Pressure Allowed	14" W.C.
Electrical Requirements	120VAC/ 1 ph/ 60 hz/ 10 amp	Operating Weight	683 lbs. / 310 kg.

TEMPERATURE RISE / PRESSURE DROP

20° F / 11.1° C		25° F / 13.9° C		30° F / 16.7° C		35° F / 19.4° C									
Flow Rate	Pressure Drop	Flow Rate	Pressure Drop	Flow Rate	Pressure Drop	Flow Rate	Pressure Drop								
GPM	L/s	Ft	kPa	GPM	L/s	Ft	kPa	GPM	L/s	Ft	kPa				
130.5	8.2	3.73	11.0	104.4	6.6	2.46	7.3	87.0	5.5	1.76	5.2	74.6	4.7	1.32	3.9

BOILER TRIM & CONTROLS

Main Gas Valve	Dungs MBC-SE	Air Switch	Cleveland NS2
Firing Valve	1 1/4"	Blower Motor	Fasco 1 hp - FLA 2.5
Ignition Control	Honeywell RM7895C	Relief Valve - MW	3/4" x 3/4" set @ 125 psi
Operating Control	HeatNet™	Relief Valve - MB	1" x 1 1/4" set @ 50 psi
High Limit	Jumo	Flow Switch	ITT FS251
Main Ball Valve	1 1/4"	Solenoid Valve w/ Reg	CV100

RECOVERY CAPACITY

40°F	22° C	60°F	33° C	80°F	44° C	100°F	56° C	120°F	67° C	140°F	78° C
3917	14826	2611	9884	1958	7413	1567	5930	1306	4942	1119	4236

A.S.M.E.

ASME Sect IV Htg Surface	161.16 Sq. Ft. / 14.97 Sq. M.	Design Data	Max. 160 psig & 250° F
Water Volume	5 gal / 18.93 l (liters)		

REP FIRM _____

SUBMITTED BY _____

JOB NAME _____

ARCHITECT _____

ENGINEER _____

CONTRACTOR _____

DATE _____

FUTERA III 1500

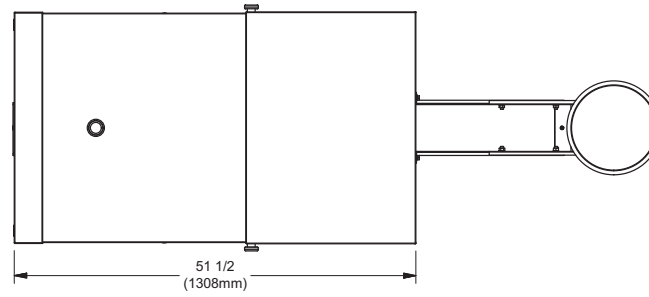
Category II or Category IV Appliance

(see Installation and Operation Manual for venting information)

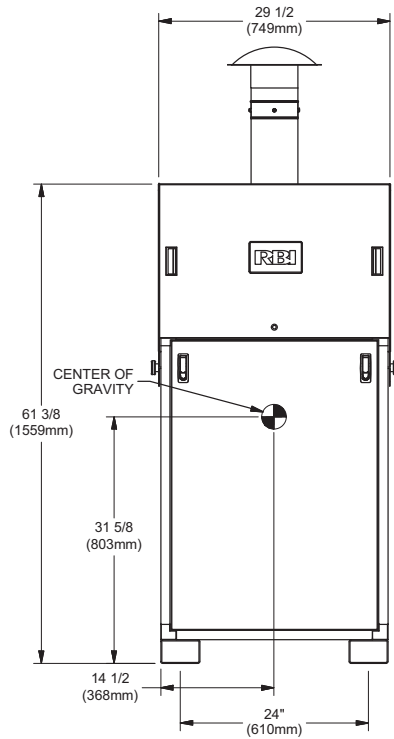
A Division of Mestek, Inc.
Westfield, MA 01085
(413) 568-9571

SFTIII-1500-7

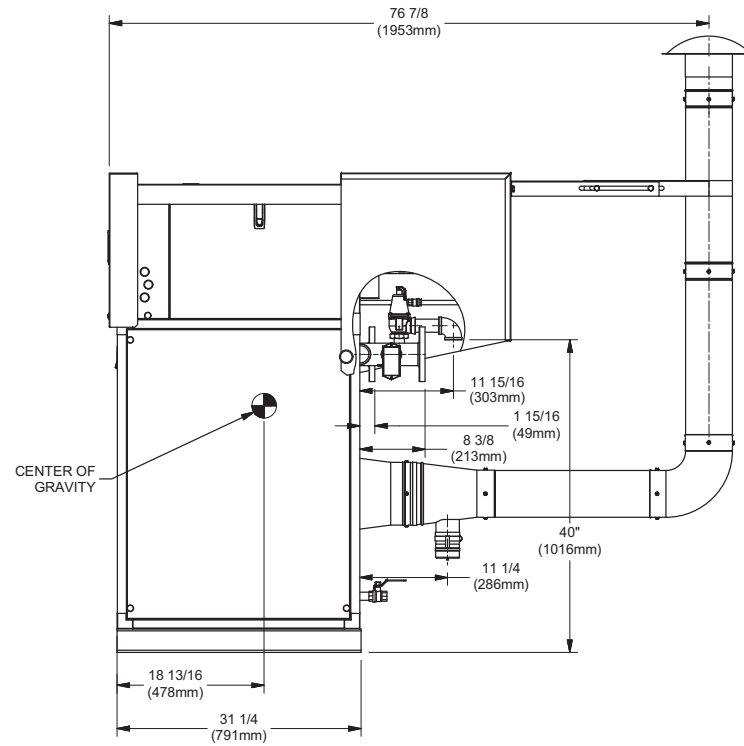
OUTDOOR UNIT



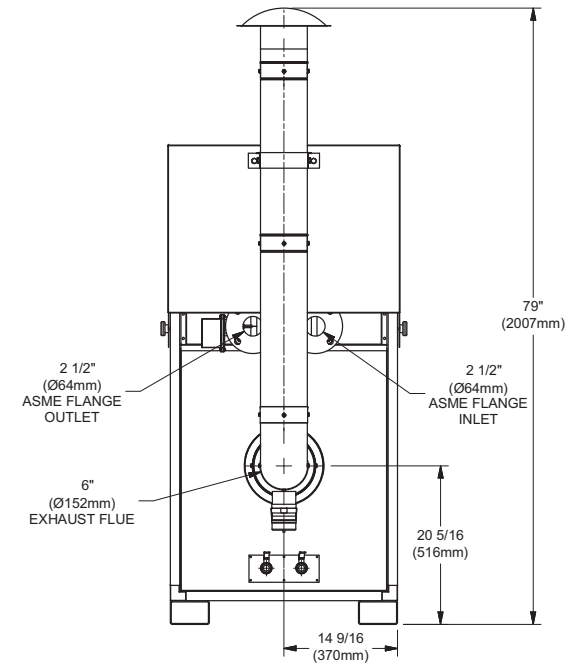
TOP VIEW



FRONT VIEW



SIDE VIEW



BACK VIEW

NOTE:
DIMENSIONS ARE SUBJECT TO CHANGE WITHOUT NOTICE.

RSUB-114-A

FUTERA III 1500