

CODE OPTIONS

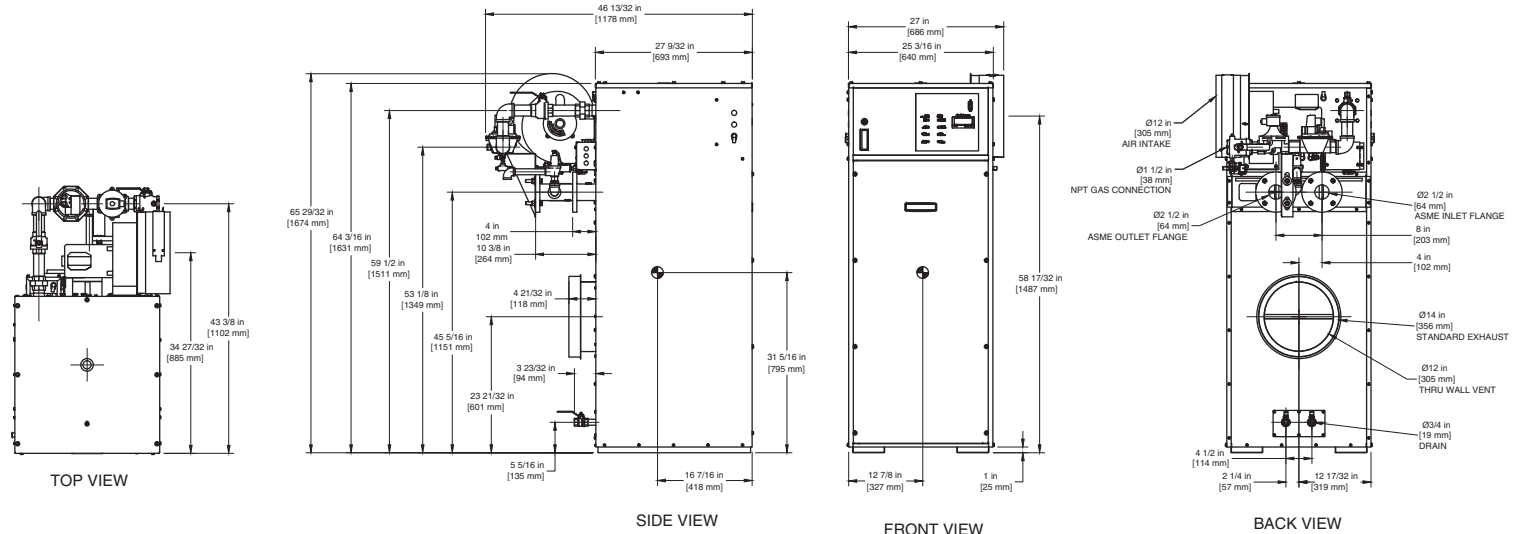
CSD-1	Manual Reset LWCO
Kentucky	200° F Maximum Operating Control and High Limit

NOTE: Dimensions are approximate and should not be used to "rough-in" equipment.

* Add circulator amps.

**For incoming gas pressures lower than 5" W.C. natural or 11" W.C. propane, consult factory.

INDOOR UNIT



NOTE: DIMENSIONS ARE SUBJECT TO CHANGE WITHOUT NOTICE

A.G.A. CERTIFIED RATINGS & CAPACITIES

Fuel Type	Natural/Propane Gas	Boiler FLA	11.5*
Input BTU/hr.	1,950,000 / 571 kW	Min. Gas Pressure Required	5" W.C.**
Output BTU/hr.	1,657,500 / 486 kW	Max. Gas Pressure Allowed	14" W.C.
Electrical Requirements	120VAC/ 1 ph/ 60 hz/ 12 amp	Operating Weight	862 lbs. / 391 kg.

TEMPERATURE RISE / PRESSURE DROP

25° F / 13.9° C				30° F / 16.7° C				35° F / 19.4° C			
Flow Rate		Pressure Drop		Flow Rate		Pressure Drop		Flow Rate		Pressure Drop	
GPM	L/s	Ft	kPa	GPM	L/s	Ft	kPa	GPM	L/s	Ft	kPa
132.6	8.4	5.14	15.1	110.5	7.0	3.70	10.8	94.7	6.0	2.80	8.1

BOILER TRIM & CONTROLS

Main Gas Valve	V4944B	Main Ball Valve	1 1/2 "
Firing Valve	1 1/2"	Solenoid Valve w/ Reg	CV100
Safety Valve	ASCO L8214G 1 1/2"	Air Switch	HUBA
Ignition Control	Honeywell RM7897C	Blower Motor	Marathon 3/4 hp - FLA 9.8
Operating Control (FB/FW)	Jumo	Relief Valve - FB	1" x 1 1/4" set @ 50 psi
High Limit	Honeywell L4008E	Relief Valve - FW	3/4" x 3/4" set @ 125 psi
		Flow Switch	TACO IFS-1

A.S.M.E.

ASME Sect IV Htg Surface	215.98 Sq. Ft. / 20.06 Sq. M.	Design Data	Max. 160 psig & 250° F
Water Volume	5.7 gal / 21.6 l (liters)		

RECOVERY CAPACITY

40°F	22° C	60°F	33° C	80°F	44° C	100°F	56° C	120°F	67° C	140°F	78° C
4974	18831	3316	12554	2487	9415	1990	7532	1658	6277	1421	5380

REP FIRM _____
 SUBMITTED BY _____
 JOB NAME _____
 ARCHITECT _____
 ENGINEER _____
 CONTRACTOR _____
 DATE _____

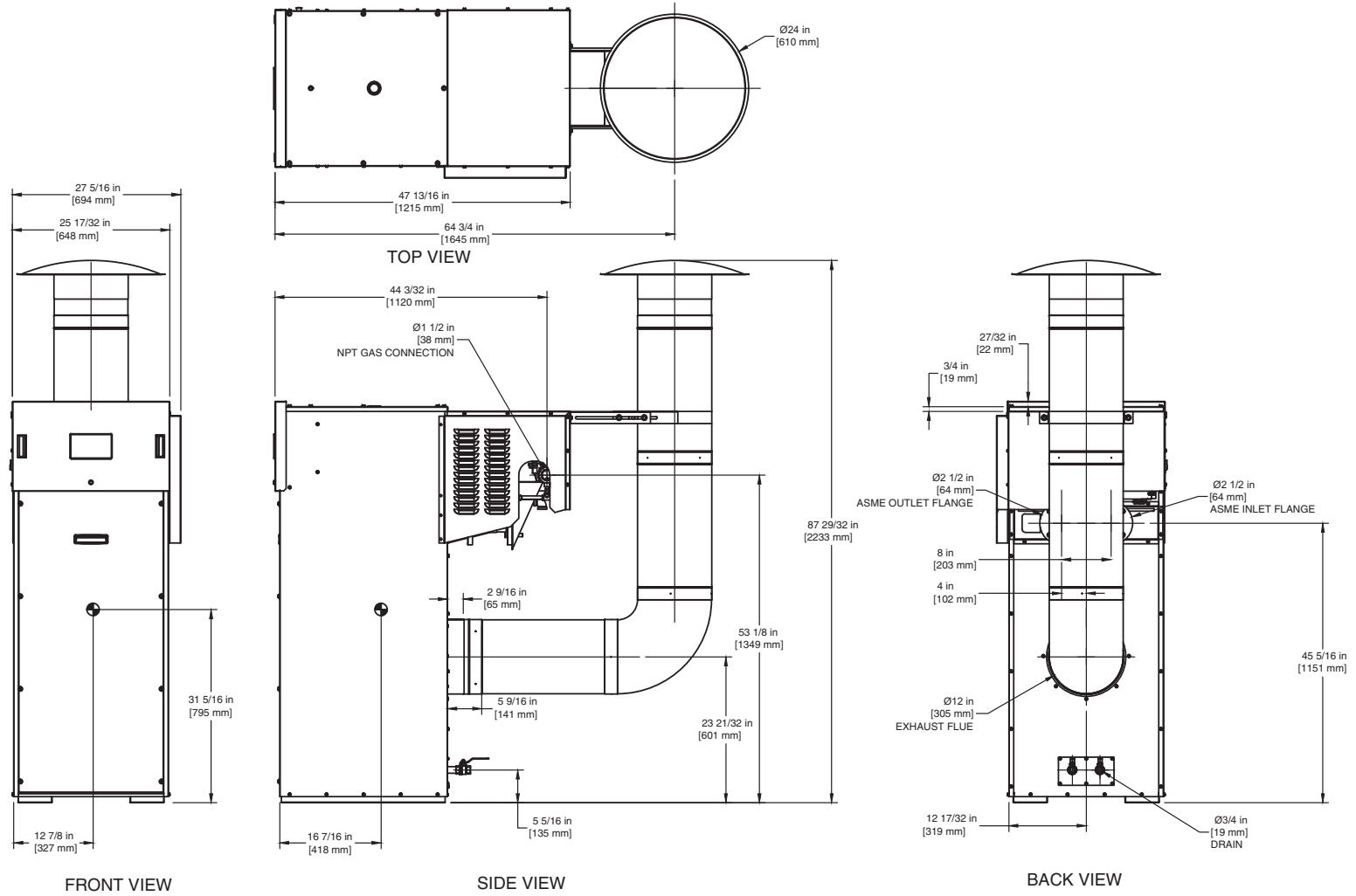
FUTERA II 1950

Category I or Category III Appliance
 (see Installation and Operation Manual for venting information)



A Division of Mestek, Inc.
 Westfield, MA 01085
 (413) 568-9571

OUTDOOR UNIT



NOTE: DIMENSIONS ARE SUBJECT TO CHANGE WITHOUT NOTICE