

CODE OPTIONS

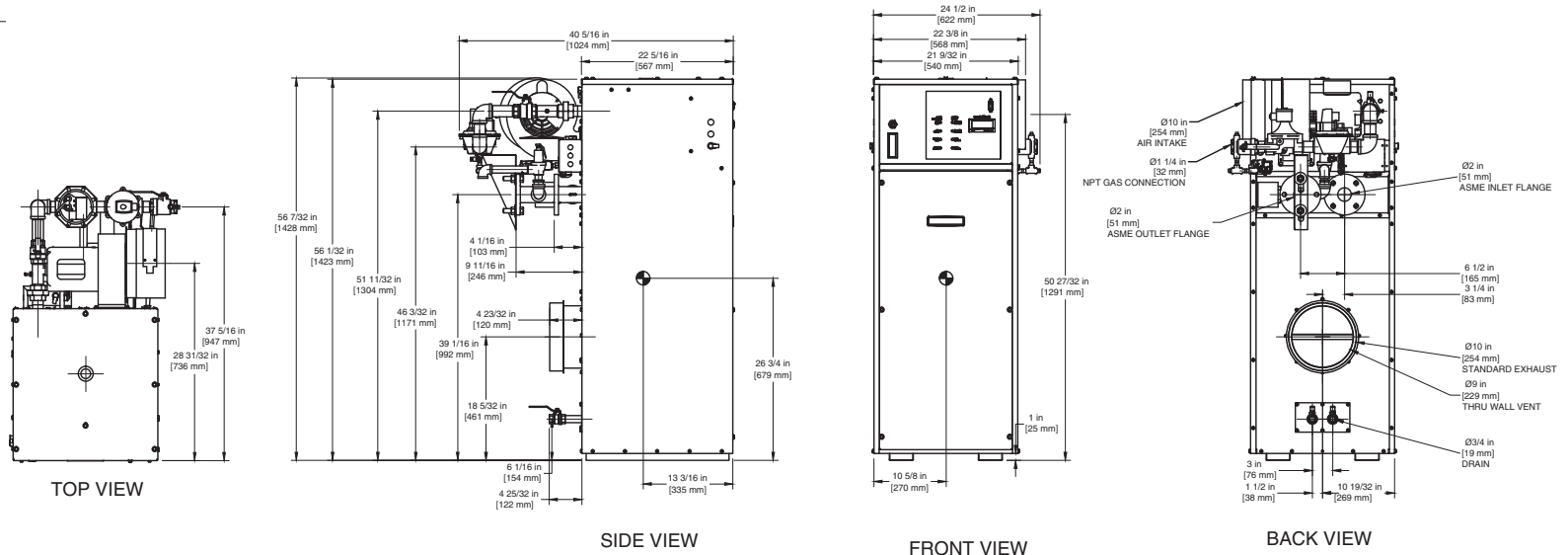
CSD-1	Manual Reset LWCO
Kentucky	200° F Maximum Operating Control and High Limit

NOTE: Dimensions are approximate and should not be used to "rough-in" equipment.

* Add circulator amps.

**For incoming gas pressures lower than 5" W.C. natural or 11" W.C. propane, consult factory.

INDOOR UNIT



NOTE: DIMENSIONS ARE SUBJECT TO CHANGE WITHOUT NOTICE

A.G.A. CERTIFIED RATINGS & CAPACITIES

Fuel Type	Natural/Propane Gas	Boiler FLA	5.3*
Input BTU/hr.	1,000,000 / 293 kW	Min. Gas Pressure Required	5" W.C.**
Output BTU/hr.	850,000 / 249 kW	Max. Gas Pressure Allowed	14" W.C.
Electrical Requirements	120VAC / 1 ph / 60 hz / 6 amp	Operating Weight	578 lbs. / 262 kg.

TEMPERATURE RISE / PRESSURE DROP

20° F / 11.1° C				25° F / 13.9° C				30° F / 16.7° C				35° F / 19.4° C			
Flow Rate		Pressure Drop		Flow Rate		Pressure Drop		Flow Rate		Pressure Drop		Flow Rate		Pressure Drop	
GPM	L/s	Ft	kPa	GPM	L/s	Ft	kPa	GPM	L/s	Ft	kPa	GPM	L/s	Ft	kPa
85.0	5.4	3.44	10.1	68.0	4.3	2.27	6.7	56.7	3.6	1.60	4.8	48.6	3.1	1.20	3.6

BOILER TRIM & CONTROLS

Main Gas Valve	V4944B	Main Ball Valve	1 1/4"
Firing Valve	1 1/4"	Solenoid Valve w/ Reg	CV100
Safety Valve	ASCO L8214G 1 1/4"	Air Switch	HUBA
Ignition Control	Honeywell RM 7897C	Blower Motor	Fasco 1/4 hp - FLA 3.6
Operating Control (FB/FW)	Jumo	Relief Valve - FB	3/4" x 1" set @ 50 psi
High Limit	Honeywell L4008E	Relief Valve - FW	3/4" x 3/4" set @ 125 psi
		Flow Switch	TACO IFS-1

RECOVERY CAPACITY

40°F	22° C	60°F	33° C	80°F	44° C	100°F	56° C	120°F	67° C	140°F	78° C
2551	9657	1701	6438	1276	4828	1020	3863	850	3219	729	2759

A.S.M.E.

ASME Sect IV Htg Surface	126.07 Sq. Ft. / 11.71 Sq. M.	Design Data	Max. 160 psig & 250° F
Water Volume	4.0 gal / 15.2 l (liters)		

REP FIRM _____
 SUBMITTED BY _____
 JOB NAME _____
 ARCHITECT _____
 ENGINEER _____
 CONTRACTOR _____
 DATE _____

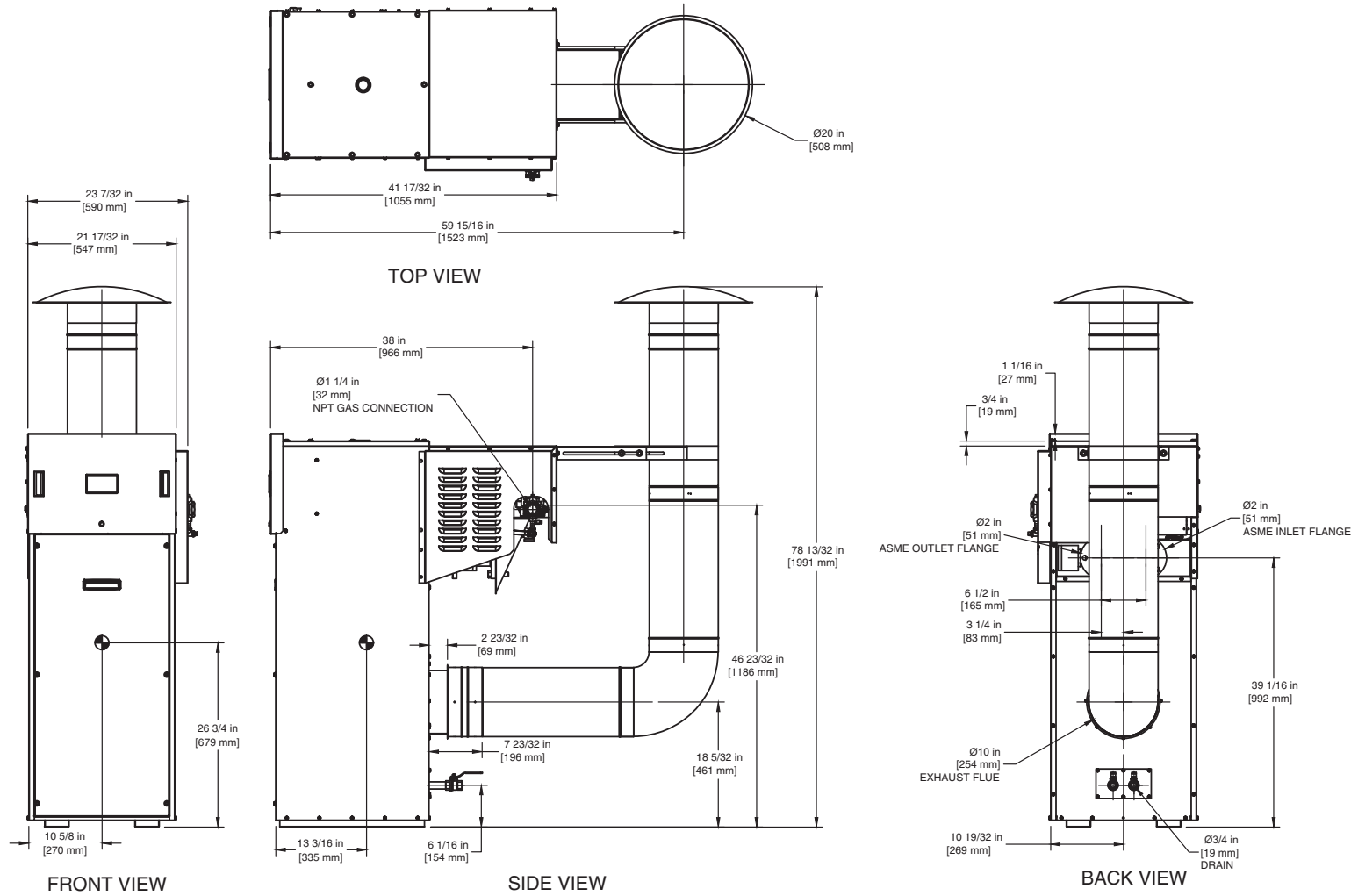
FUTERA II 1000

Category I or Category III Appliance
 (see Installation and Operation Manual for venting information)



A Division of Mestek, Inc.
 Westfield, MA 01085
 (413) 568-9571

OUTDOOR UNIT



NOTE: DIMENSIONS ARE SUBJECT TO CHANGE WITHOUT NOTICE