

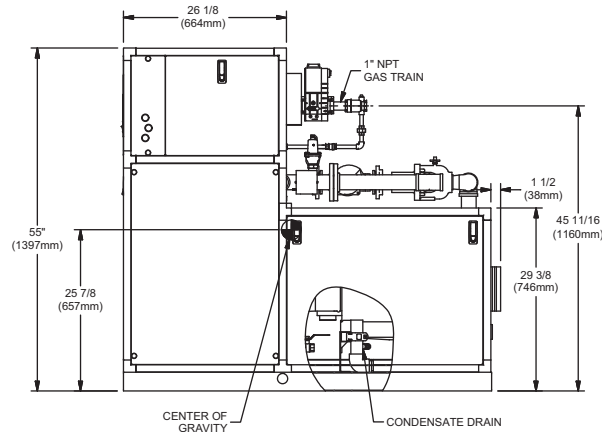
CODE OPTIONS

CSD-1	Manual Reset LWCO
Kentucky	200° F Maximum Operating Control and High Limit

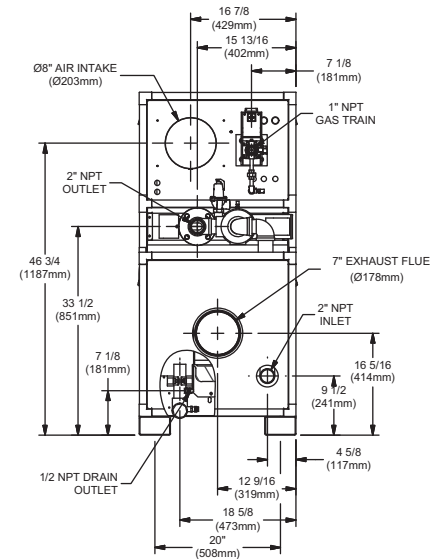
NOTE: Dimensions are approximate and should not be used to "rough-in" equipment.

* Includes pump
 ** For incoming gas pressures lower than 2" W.C. natural or propane, consult factory.

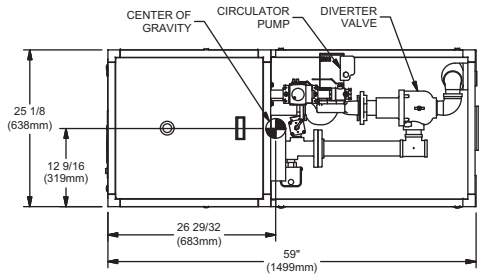
INDOOR UNIT



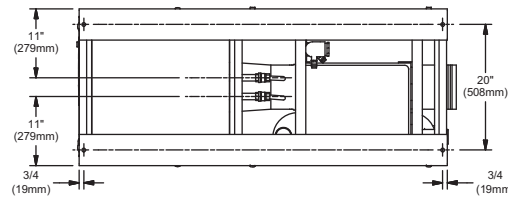
SIDE VIEW



BACK VIEW



TOP VIEW



BOTTOM VIEW

RSUB 97 REV. F

A.G.A. CERTIFIED RATINGS & CAPACITIES

Fuel Type	Natural/Propane Gas	Total FLA	9*
Input BTU/hr.	750,000 / 220 kW	Min. Gas Pressure Required	2" W.C.**
Output BTU/hr.	713,250 / 209 kW	Max. Gas Pressure Allowed	14" W.C.
Electrical Requirements	120VAC/ 1 ph/ 60 hz	Operating Weight	699 lbs. / 317 kg.

TEMPERATURE RISE / PRESSURE DROP

20° F / 11.1° C				25° F / 13.9° C			
Flow Rate***	Total Loss****	Flow Rate***	Total Loss****	Flow Rate***	Total Loss****	Flow Rate***	Total Loss****
GPM	L/s	Ft	kPa	GPM	L/s	Ft	kPa
65.3	4.1	10.5	31.4	52.2	3.3	7.7	23.0

Primary heat exchanger. *Includes primary, secondary, mixing valve and piping.

BOILER TRIM & CONTROLS

Main Gas Valve	Dungs MBC-SE	Air Switch	Cleveland NS2
Firing Valve	1"	Blower Motor	Fasco 1/2 hp
Ignition Control	Honeywell RM7895C	Relief Valve - CW	3/4" x 3/4" set @ 125 psi
Operating Control	HeatNet™	Relief Valve - CB	3/4" x 3/4" set @ 50 psi
High Limit	Jumo	Flow Switch	ITT FS251
Main Ball Valve	1"	Solenoid Valve w/ Reg	CV100
Economizer	RBI-1000	Circulator	B&G PL-130 - FLA - 5
Mixing Valve	2"	By-Pass Piping	2"

TOTAL BOILER RECOVERY

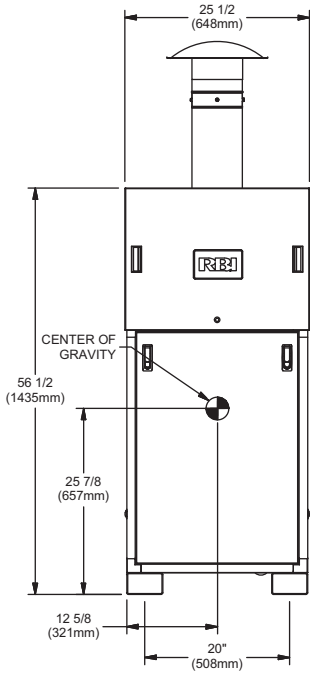
40°F	22° C	60°F	33° C	80°F	44° C	100°F	56° C	120°F	67° C	140°F	78° C
2141	8103	1427	5402	1070	4052	856	3241	714	2701	612	2315

A.S.M.E.

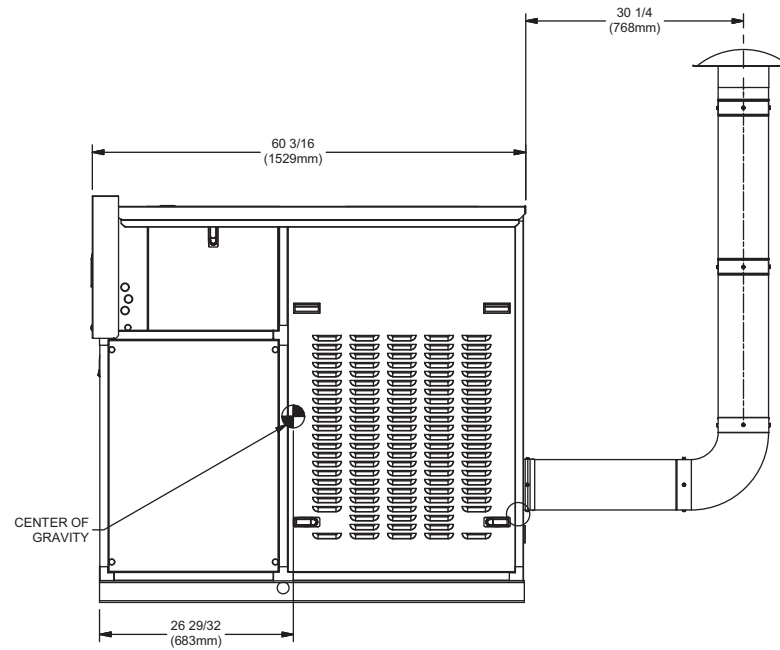
ASME Sect IV Htg Surface	97.79 Sq. Ft. / 9.08 Sq. M.	Design Data	Max. 160 psig & 250° F
Water Volume	3.7 gal. / 14.01 l (liters)	Secondary Heat Exchanger	125 psi
Water Volume Secondary HX	4.5 gal. / 17.03 l (liters)		

REP FIRM	_____	FUTERA FUSION 750 Category II or IV Appliance (see Installation and Operation Manual for venting information)
SUBMITTED BY	_____	
JOB NAME	_____	
ARCHITECT	_____	
ENGINEER	_____	
CONTRACTOR	_____	RBI ® A Division of Mestek, Inc. Westfield, MA 01085 (413) 568-9571
DATE	_____	

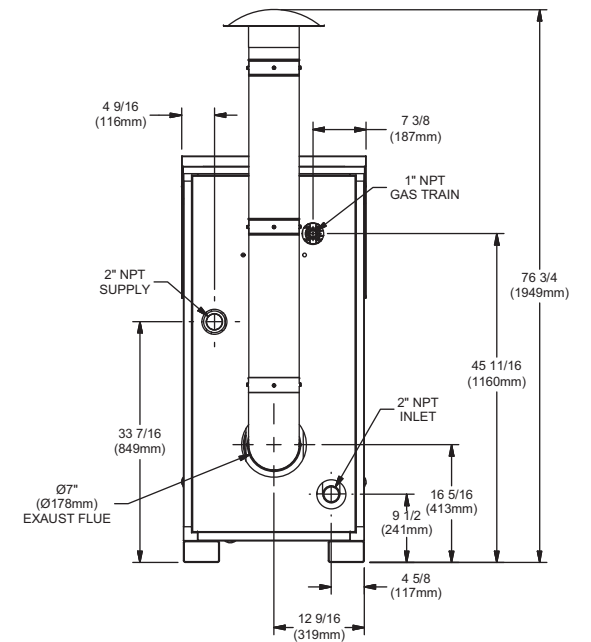
OUTDOOR UNIT



FRONT VIEW



SIDEVIEW



BACK VIEW