

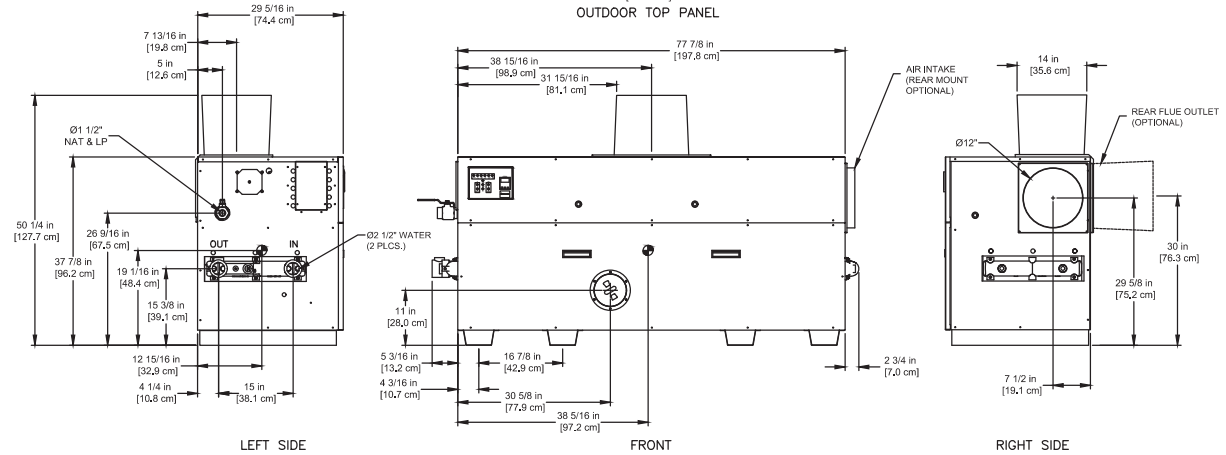
**CODE OPTIONS**

<b>CSD-1</b>	UTC Lockout/Reset Control Manual Reset LWCO
<b>Kentucky</b> (Water Htr Only)	200°F Maximum Operating Control and High Limit

**NOTE:** Dimensions are approximate and should not be used to "rough-in" equipment.

\* Add circulator amps.

\*\*For incoming gas pressures lower than 7" WC natural or 11" WC propane, consult factory.



RSUB-34-F

**AGA CERTIFIED RATINGS & CAPACITIES**

<b>Fuel Type</b>	Natural/Propane Gas	<b>Boiler FLA</b>	11.0*
<b>Input BTU/hr.</b>	1,500,000 / 440 kW	<b>Min. Gas Pressure Required</b>	6" WC**
<b>Output BTU/hr.</b>	1,275,000 / 374 kW	<b>Max. Gas Pressure Allowed</b>	14" WC
<b>Electrical Requirements</b>	120VAC/ 1 ph/ 60 hz/ 14 amp	<b>Operating Weight</b>	846 lbs. / 384 kg.

**TEMPERATURE RISE / PRESSURE DROP**

25°F / 13.9°C		30°F / 16.7°C		35°F / 19.4°C							
Flow Rate	Pressure Drop	Flow Rate	Pressure Drop	Flow Rate	Pressure Drop						
GPM	L/s	Ft	kPa	GPM	L/s	Ft	kPa	GPM	L/s	Ft	kPa
102.1	6.4	6.31	18.6	85.1	5.4	4.50	13.3	72.9	4.6	3.38	10.0

**BOILER TRIM & CONTROLS**

<b>Main Gas Valve</b>	Honeywell (2) V8944 1"	<b>Pilot Valve</b>	Honeywell VR8205
<b>Firing Valve</b>	Honeywell (2) B200T1033 1"	<b>Air Switch</b>	Cleveland RSS-495
<b>Safety Valve</b>	ASCO L8214G 1-1/4"	<b>Blower Motor</b>	(2) 1/4 hp - FLA 10.2
<b>Ignition Control</b>	UTC 1003-61A	<b>Relief Valve - DW</b>	3/4" x 3/4" set @ 125 psi
<b>Operating Control</b>	Tekmar BTC-2PA	<b>Relief Valve - DB</b>	3/4" x 1" set @ 50 psi
<b>Operating Control</b>	Tekmar BTC-4PA	<b>Flow Switch</b>	TACO IFS-1
<b>High Limit</b>	Honeywell L4008E		

**RECOVERY CAPACITY**

40°F	22°C	60°F	33°C	80°F	44°C	100°F	56°C	120°F	67°C	140°F	78°C
3827	14485	2551	9657	1913	7243	1531	5794	1276	4828	1093	4139

**ASME**

<b>ASME Sect IV Htg Surface</b>	149.0 Sq. Ft. / 13.84 Sq. M.	<b>Design Data</b>	Max. 160 psig & 250°F
<b>Water Volume</b>	4.92 gal / 18.6 l (liters)		

**REP FIRM** \_\_\_\_\_

**SUBMITTED BY** \_\_\_\_\_

**JOB NAME** \_\_\_\_\_

**ARCHITECT** \_\_\_\_\_

**ENGINEER** \_\_\_\_\_

**CONTRACTOR** \_\_\_\_\_

**DATE** \_\_\_\_\_

**DOMINATOR 1500**

Category I or Category III Appliance

(See Installation and Operation Manual for venting information)

® A Division of Mestek, Inc.  
Westfield, MA 01085  
(413) 568-9571